



WHAT TO KNOW ABOUT LIVING OFF-CAMPUS



LIVING OFF CAMPUS CAN BE OVERWHELMING! THERE'S SO MUCH TO KNOW. THE OFFICE OF RESIDENTIAL LIFE IS HERE TO HELP! LOOK AT THIS INFORMATIONAL GUIDE FOR ALL THE THINGS TO CONSIDER!

WHAT'S YOUR HOUSING TYPE?

STYLE

- Apartment
- House
- 1 Bedroom or Roommate

COMMUTE

- Close or far from work/campus
- Transportation
 - Car
 - Bike
 - Public Transit

When looking for a place, it's good to note that living in a house **IS NOT** the same as living in an apartment. There are various expenses and responsibilities that may differ between the two. Always explore your options fully, before making a choice on where to live. Remember, you are choosing your home!



University Related Housing Options:

- Fischer Graduate Residences: on campus apartments
- The Landings at Notre Dame- married and/ or parenting students only

WHAT'S YOUR BUDGET?

Do you know what you will be paying for? Have you considered all of your living expenses? Have you factored in insurance? Are you thinking about getting a pet?

Utilities should be clearly outlined within your lease. Be sure to read carefully, and ask as many questions as you need. Inquire about any added utilities you should be aware of. There may be amenities that are not part of the lease but are still expenses that should be considered.

ADD IT UP

- Gas
- Electric
- Water
- Sewage
- Trash
- Internet/Cable
- Community fees
- Pet fees
- Parking Fees
- Renters Insurance
- Transportation

Be sure to inquire about total move in costs, how much of the rent is due upfront, the security deposit, and whether or not the rent is prorated in the event you are moving in during the middle or at the end of a month.

SAFETY IS THE ONLY OPTION



- Where is the housing located?
- Can you safely get to and from campus/work?
- How will you stay informed about incidents in and around your community and on campus?
- Is there a crime report for your neighborhood?
- What security measures are included in your housing arrangement?

NDPD Social Media

Instagram: [enotredamepd](#)
 Facebook/X(Twitter)/YouTube- University of Notre Dame Police
 Download the ND Safe App

HERE'S A TIP

DO

- Tour a space before lease signing. Always tour in person, if able.
- Read lease entirely before signing. Get a fresh perspective from someone familiar with housing laws in your area/state. Seek legal counsel if needed.
- Get it in writing. If promised or guaranteed on the website or verbally, be sure the agreement is in writing. Never assume all parties will remember or adhere to verbal agreements.
- Keep all written communication with your landlord/leasing office
- Keep receipts of all bills paid during your stay and a copy of your lease.
- Know your rights as a tenant for the area/state in which you live
- Know your resources and where you can go for legal help.
- Understand the housing culture of where you will live. This is helpful if you are moving internationally
- Ask about cancellation options if your VISA is delayed, if moving internationally
- Inspect your space upon move in and take detailed photos
- Ask about the flexibility of your move in and move out window.



HERE'S A TIP

DO NOT

- Do not put all of your trust into a virtual tour.
- Do not feel pressured into signing a lease. Explore all of your options!
- Do not assume that the best deal automatically means the best choice.
- Do not break your lease before considering the cost. Always consider the cost.
- Do not assume that all housing cultures are created equal or are the same.
- Do not invite guests without knowing the guest policy of your housing arrangement. Be a good tenant/neighbor/roommate/housemate!
- Do not disregard inconsistent changes in website language or language that is different in person than it is on the website. If you fail to receive clarity after asking or feel there is a lack of transparency, be prepared to consider other options.
- Do not fall for hidden fees. Ensure you get all costs up front.
- Do not trust a lack of follow through. If you do not feel valued during your search, be prepared to consider other options.

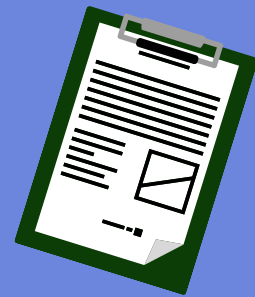


A LEASE IS A CONTRACT. SIGNING A CONTRACT ENTERS A TENANT AND LANDLORD INTO A BINDING AGREEMENT.

A LEASE IS SERIOUS BUSINESS

IF YOU EXPERIENCE ISSUES OR DO NOT UNDERSTAND CERTAIN TERMS REGARDING YOUR LEASE:

- REVIEW THE TERMS OF YOUR LEASE,
- TALK WITH YOUR LANDLORD AND/OR,
- SEEK LEGAL ADVICE.



KNOW YOUR RESOURCES

The Office of Residential Life sponsors the offcampus.nd.edu website. Here you can find information on apartments/houses recommended by the university, find a roommate, and locate resources to help you better understand life off-campus.

You may contact the Office of Residential Life's Off-Campus Housing team as well for connection to resources

CONTACT US

ANTWANN HARPER

Assistant Director for Summer and Off-Campus Housing

hantwann@nd.edu

JESSICA BOLING

Program Coordinator for Summer and Off-Campus Housing

jpeter34@nd.edu



OFFCAMPUS.ND.EDU



RESIDENTIALIFE.ND.EDU